

Location Map



Developed by :
Cradle Computers Pvt. Ltd.

Office : Sita Mansion, Sevoke Road, Siliguri
 Contact : +91 97330 98888, 97330 92222

Architect & Engineers :



DISCLAIMER

The products / specifications / architectural drawings as mentioned are tentative and subject to change at the sole discretion of the company / Architect without any prior intimation to the customers. This is not a legal document, please refer to the legal terms and conditions / draft agreement of the company prior to finalization.



ABOUT THE PROJECT :



Increasingly, it's a trend among people to buy homes in the city in order to enjoy a healthy ambience. **SBM BLISS** has wide open space landscaped to perfection. Its locational advantage, exquisite looks, with no compromise on quality are some of its salient features, which makes it warm and enticing. **SBM BLISS** aspires to fulfill the aspirations and dreams of yours to come TRUE.

Putting together everything, the ambience of **SBM BLISS** reflects sophisticated comfort and high living.

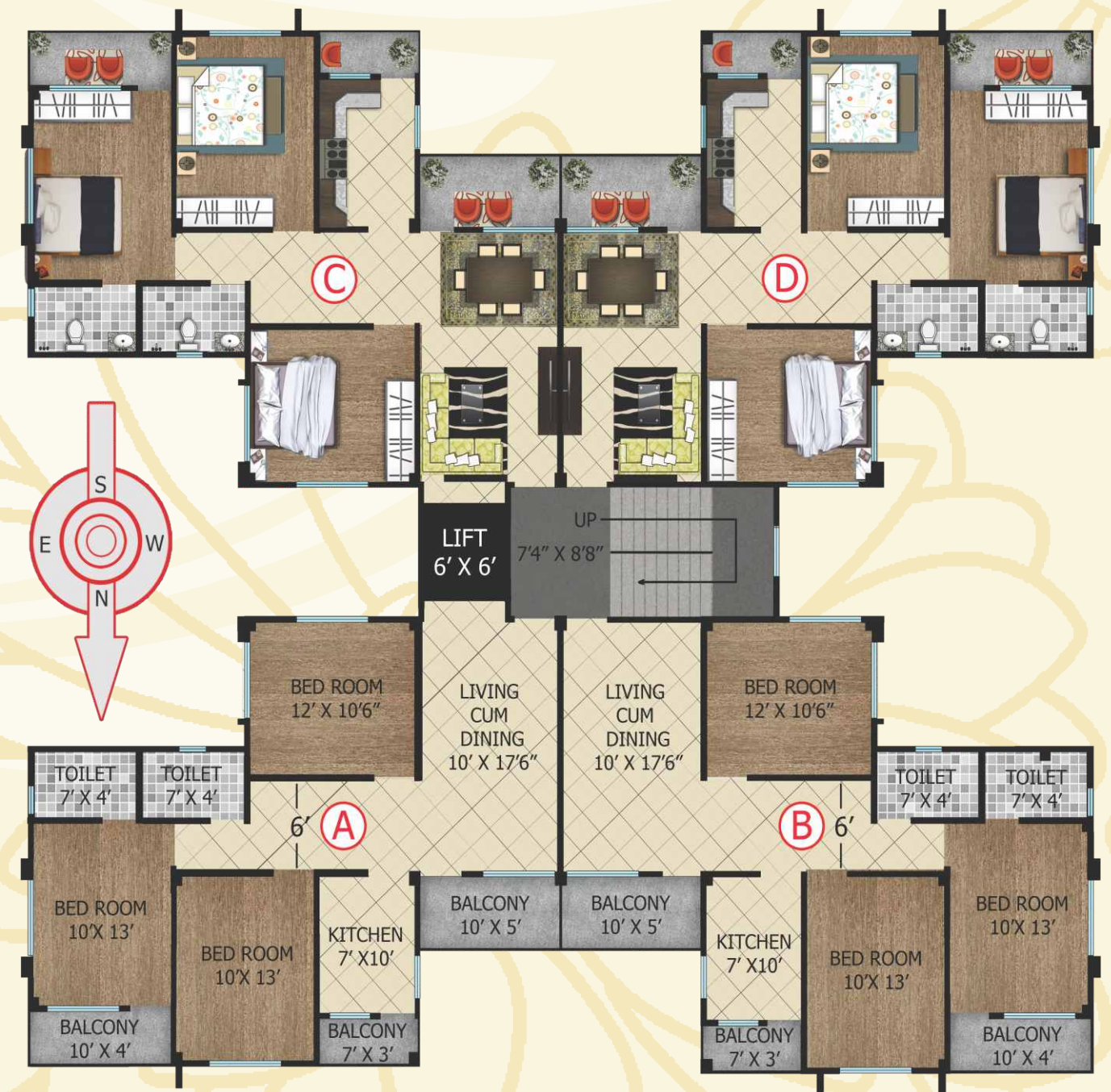
AMENITIES

- Eco-friendly design with more than 50% Green/Open space.
- 24 X 7 Security Service.
- CCTV and surveillance system in lobby.
- Intercom in each flat.
- Video Door Phone in each flat (At Owners cost).
- Fire fighting system.
- Lift
- 24 X 7 power back up through D.G. set (At owners cost).
- Ample car parking. (At owners cost).

SPECIFICATION

Structure	:	Earthquake resistant R.C.C. frame structure.
Walls	:	Bricks wall for exterior and interior walls.
External Wall Finish	:	Combination of textured and acrylic paint.
Internal Wall Finish	:	Smooth finish with white putty of reputed brand.
Doors	:	High quality flush door fitted with branded hardware.
Windows	:	Aluminium window fitted with high performance glass.
Flooring	:	
Bed Room	:	Selected Vitrified tiles of reputed brand.
Hall	:	Selected Vitrified tiles of reputed brand.
Toilet / Kitchen	:	Selected Anti skid ceramic tiles of reputed brand.
Kitchen	:	
Counter	:	Selected granite top with S.S. sink of reputed brand.
Wall	:	Selected ceramic tiles of reputed brand upto 2ft. above counter.
Furnish	:	Modular Kitchen fitted with Chimney (at owners cost).
Toilets	:	
Sanitaryware	:	Elegant white vitrified sanitaryware of reputed brand.
C.P. Fittings	:	Luxury quality of Jaquar or equivalent brand.
Wall Furnish	:	Selected ceramic tiles of reputed brand up to door height.
Electricals	:	
Cables	:	Fire resistant copper electrical conductors/cables.
Switches	:	Elegant modular switches of reputed brand.
Switchgears	:	MCB and ELCB and ACCL of reputed brand. Inverter wiring provided in each flat.

Note : Electrical connection from West Bengal State Electricity Board to be arranged by the purchaser on her own costs.



FLAT	A	B	C	D
SIZE	1265 Sqft	1296 Sqft	1290 Sqft	1299 Sqft

